



# Cactus Bloom

Community School

A Wildflower School

# DECEMBER

# 2024



## Important Reminders:

- January Lunch Lizard Sign Up [here](#).

Please complete by 1/2 at 8 PM. Please take a moment to review the menu with your child to ensure they are happy with the meal choices.

- Sign up to supply a class snack for the month of January [here](#).

## WHAT IS IN THIS ISSUE:

- Intent to Enroll
- Positive Discipline
- Classroom Information
- Important Dates
- Community Design Team
- Material Highlight

The mission of Cactus Bloom Community School is to provide families with child-centered, authentic Montessori education that bridges academic outcomes and social-emotional development in an intimate learning community deeply rooted in **agency**, **equity** and **belonging**.





# Intent to Enroll

## Returning Students and Siblings

### 2025-2026

## School Year



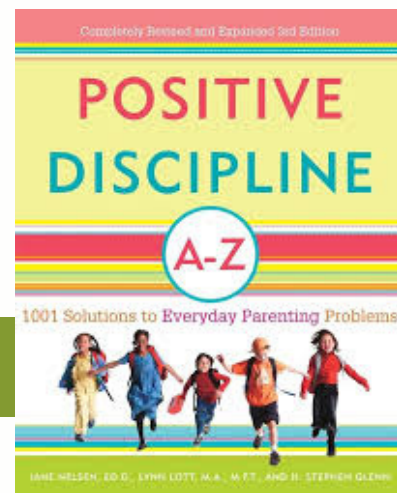
### Planning for Next Year

As we look ahead to the future of Cactus Bloom Community School, we're excited to begin planning for our second year together! We kindly ask that you complete the linked intent-to-enroll form [here](#) for your returning student(s) as well as new siblings by Monday, January 27th so that we can prepare for our new-student lottery at the beginning of February.

We are so grateful for the partnership we've built with our families and can't wait to continue growing together. Thank you for helping us prepare for another wonderful year at Cactus Bloom!



# Positive Discipline: The Montessori Way



Our staff recently had a fantastic professional development session on **Positive Discipline in the Montessori Classroom**. Discipline is often misunderstood as negative or focused on punishment, but it doesn't have to be that way! Positive Discipline emphasizes guidance and teaching to foster respect, cooperation, and self-discipline in children—approaching discipline as a constructive and empowering process.

## What is Positive Discipline?

Positive Discipline is an approach that combines firmness with dignity and respect. It provides children with freedom within limits, encourages mutual problem-solving, and promotes behaviors that show respect for all.

Key elements include:

- Responsibility, self-discipline, and cooperation
- Respect, compassion, and honesty
- Problem-solving and objective thinking skills

This approach emphasizes natural and logical consequences, encouragement over criticism, and redirection of misbehavior, fostering a respectful and supportive environment.

## Here are some helpful resources and articles to support you in implementing Positive Discipline at home:

- Positive Discipline Website: [www.positivediscipline.com](http://www.positivediscipline.com) – Offers books, tools, and tips for parents.
- "Positive Discipline: A-Z" by Jane Nelsen: A comprehensive guide with practical solutions for common parenting challenges.
- "The Whole-Brain Child" by Daniel J. Siegel and Tina Payne Bryson: Explores brain-based approaches to discipline and emotional regulation.
- [Positive Discipline 101](#): Offering a positive method to redirect children in a way that is respectful, yet firm.
- [Positive Time Out \(Taking a Time-In\)](#)
- [Providing Limited Choices](#)
- [Kind and Firm Parenting](#)



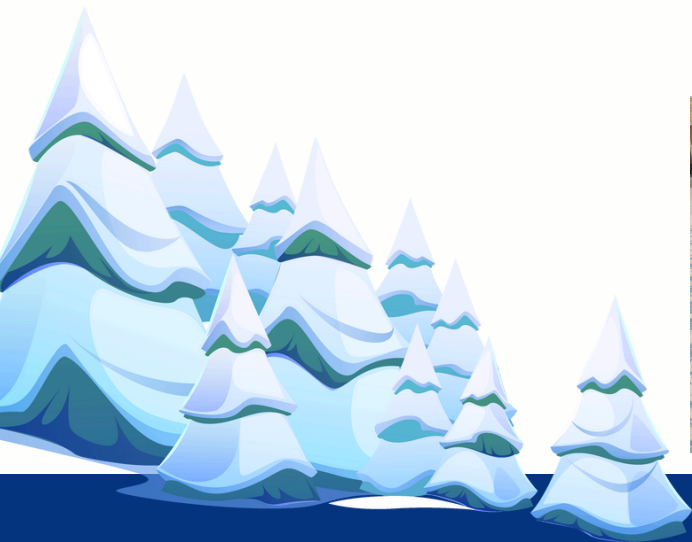
# Primary News



This month our students have worked very hard amidst the excitement of the holiday season and the special celebrations that accompany it, including our Hot Cocoa Show Me Day, our Buddy Book Exchange, and the start of our Mystery Reader visits! Closing out this first half of our school year, they have learned how to navigate their way in their classroom with work choices and explore connections with others in their class community, with a strong essence of independence piquing. Showing awareness of an extensive variety of works, the children are utilizing their independence by choosing works they've had lessons on to continue the exploration and development of the skills obtained from them, all the while, initiating their social emotional skills into kind, empathetic experiences with their peers.

Maria Montessori said, "Independence is not a static condition; it is a continuous conquest, and in order to reach not only freedom, but also strength, and the perfecting on one's own powers, it is necessary to follow this path of unremitting toil." Our children are naturally eager for learning and connection, and are proud to show what they are capable of when applying their skills and practices they've acquired not only into their academic work, but also in their continually blooming interactions they exchange between each other on a daily basis.

I am very proud of each and everyone of our Primary students and their own individual journeys they have unremittingly travelled so far this school year. It has been a delightful first half of the school year, and I am excited to continue guiding them along their paths as they take advantage of their strengths and continue their conquest to become kind, independent, and wonderful members of our community.



# Lower Elementary News



## Ending 2024 with Learning and Joy

As 2024 comes to a close, we've been amazed by the focus and dedication our students have shown, even during this exciting and high-energy time of year. Their enthusiasm for learning continues to shine!

This season, we explored the Lights of Winter, studying celebrations from around the world. Through this lens, students have engaged in meaningful projects that delve into the traditions and cultures of various regions, deepening their understanding and appreciation of global diversity.

It's been a wonderful way to end the year, filled with curiosity, creativity, and joy. We can't wait to see what 2025 will bring!



# International Day

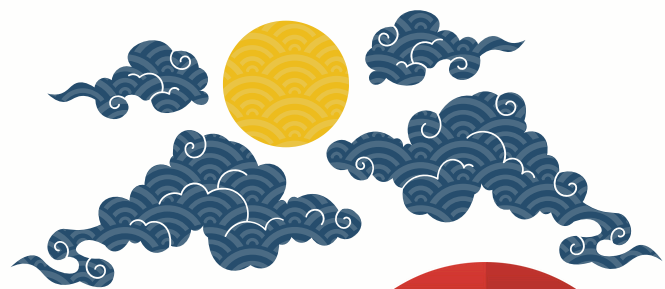


## Why We Celebrate International Day?

We will celebrate International Day in February to honor the Montessori commitment to fostering empathy, understanding, and cultural appreciation. By exploring different cultures, children learn to value diverse traditions and perspectives, helping them develop compassion and respect for others.

This year, our elementary students will be studying Japan. They will dive deeper into Japanese culture by working on research projects focusing on specific aspects of this rich and fascinating country. If your family has any information, items, or experiences related to Japan, we'd love for you to share them with us!

More detailed information will be shared soon, as we will need your help to make this a wonderful and enriching experience for all. Thank you for supporting this meaningful celebration of diversity!



# Do you want to want to make a difference at our school? Then....



Become a member of the Community Design Team for your students school, Cactus Bloom! Members of the CDT help design and support the implementation of various school-wide initiatives, including family engagement events and education, scheduling, and programming, while holding true to our core values: agency, equity, and belonging.

Learn more [here](#).

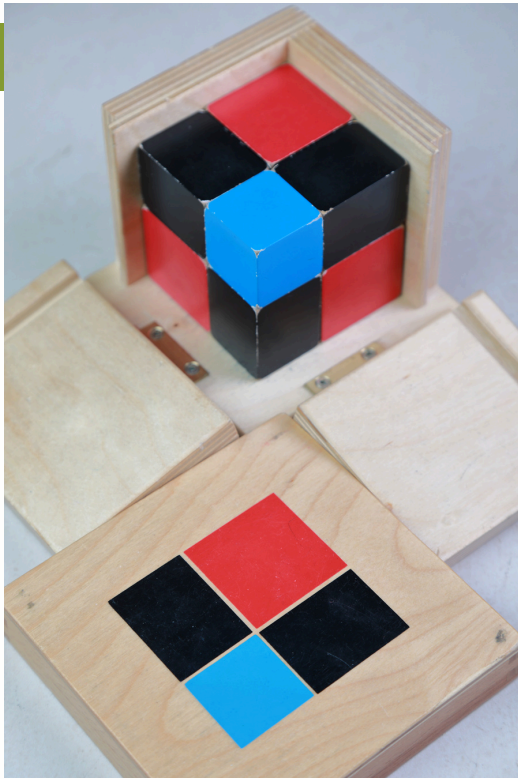


## Important Dates:

- **January 6th:** Staff Development Day-**No School**
- **January 7th:** First Day Back for Students
- **January 20th:** Martin Luther King Day-**No School**
- **January 21st-24th:** Kinder-Elementary NWEA Middle of Year Testing
- **January 27th-31st:** Kinder-Elementary Middle of the Year Reading Assessment



# MATERIAL SPOTLIGHT:



## The Binomial Cube: A Hands-On Path to Algebra

**This month, we're exploring the Binomial Cube, an iconic Montessori material found in the Sensorial area. The Binomial Cube is a multi-piece puzzle with eight components: one red cube, one blue cube, and six black-and-colored prisms. These pieces fit together to form a larger cube, and their color pattern is illustrated on the lid of the hinged storage box.**

When we hear “Algebra,” we may recall memorizing formulas and using calculators. Montessori education takes a different approach, making abstract concepts tangible. The Binomial Cube, a material found in both Primary and Elementary classrooms, is a prime example.

In the Primary environment, the Binomial Cube is introduced as an intriguing puzzle, engaging the child’s senses to explore patterns, sizes, and relationships. Through repeated manipulation, children develop concentration, reasoning, and problem-solving skills.

In the Elementary classroom, this same material becomes a concrete representation of the algebraic formula  $(a+b)^3$ , connecting early sensorial exploration to advanced mathematical concepts.

Dr. Montessori’s vision reminds us that the mathematical mind grows not only through computation but through logic, patterns, and curiosity fostered by hands-on learning.